

HISTORIQUE IIIa™

34 Stops
Ultra-Compact Three Manual Console



FEATURING:

- Nine complete stop lists; 6 Classical, 3 Theatre
- Allen DSP tone generation technology
- Console Controller™ with many advanced console features
- Stop-by-Stop and Note-by-Note Voicing
- Advanced MIDI capabilities
- LED lighted stop controls
- 32-Note compact radiating pedalboard
- Acoustic Portrait™ - actual samples acoustics
- Hymn Player™ - automatically plays over 150 classic hymns

AVAILABLE OPTIONS:

- 32-note parallel pedalboard



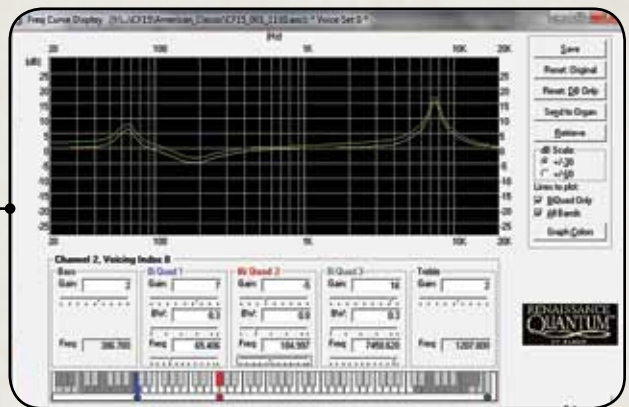
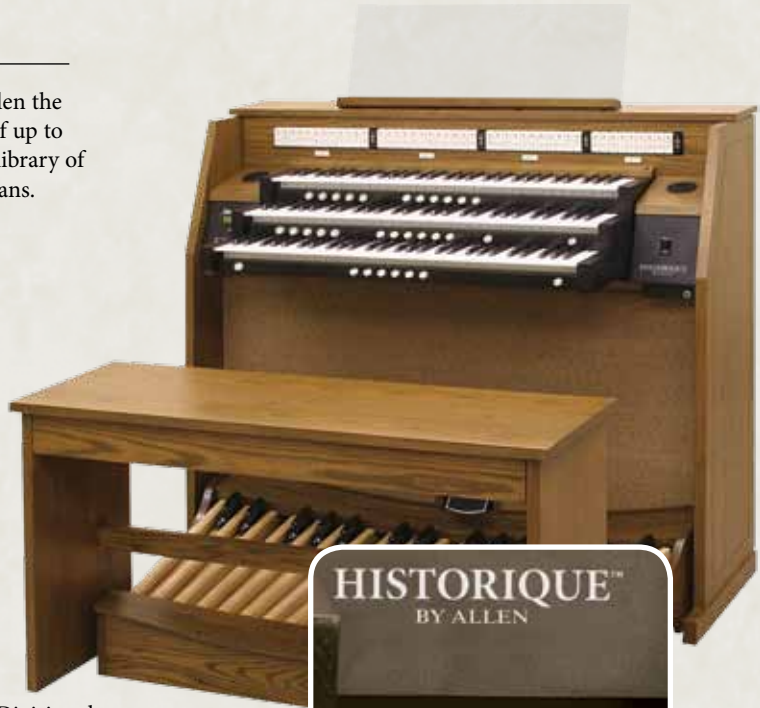
150 Locust Street, Macungie, PA 18062 USA
Phone: 610-966-2202 • E-mail: aosales@allenorgan.com
Web site: www.allenorgan.com

HISTORIQUE IIIa™

Classic Allen is the organ's "signature" specification that made Allen the world's favorite organ! **HISTORIQUE IIIa** offers the flexibility of up to nine organ specifications in one console with an optional virtual library of organs sampled from world-famous classical and theatre pipe organs.

HISTORIQUE IIIa EXCLUSIVE ADVANTAGES:

- **Six complete classical stop lists including:**
 - Classic Allen
 - English Cathedral
 - Cavaillé-Coll
 - Schlicker
 - Arp Schnitger
 - Aeolian-Skinner
- **Three Theatre stop lists:** Wurlitzer, Barton, Morton (engraved in red on stops)
- **Medium-oak console**
- **Clear acrylic music rack**
- **Swell and Great Tremulants**
- **Capture Pistons:** 8 Memories
- **Capture Pistons:** 8 Memories for capture action; 10 Generals, 6 Divisionals, Set, Cancel
- **Alternate Tunings**
- **Bass Coupler**
- **Headphone jack**
- **Industry standard velocity-sensitive keyboards**
- **10 year limited warranty. See warranty for details.**
- **Audio System:** Two channels, 120 watts RMS, including a 15 inch woofer
- **Console Dimensions:** Width 50-1/2" (128.3 cm); Height 45-1/2" (115.57 cm); w/music rack 56" (142.24 cm); Depth 23-1/8" (58.7cm) at keyboards without pedalboard, 38-3/4" (98.4 cm) with pedalboard
- **Stop-by-stop and note-by-note voicing capabilities**



Comprehensive Voicing Capabilities including (optional software package):

- Stop-by-stop and note-by-note voicing
- Parametric Equalization (PEQ)
- SoundMatrix™ - Library of additional samples (Option)

HISTORIQUE IIIa Options:

- **32-Note Parallel Pedalboard**
- Ensemble™ Kit or MIDI Assistant™
- **Voicing software package**

Specifications and stop lists subject to change without notice or obligation. Cover console shown with optional 32-Note parallel pedalboard.

HISTORIQUE IIIa - CLASSIC ALLEN STOP LIST

PEDAL	SWELL	GREAT	POSITIV
16 BOURDON	8 GEDACKT	16 LIEBLICH GEDACKT (SW)	8 HOLZ GEDACKT
16 BOURDON DOUX (SW)	8 SALICIONAL	8 PRINCIPAL	4 PRINZIPAL
8 OCTAVE	8 VOIX CELESTE	8 HARMONIC FLUTE	4 KOPPELFLÖTE
8 GEDACKTFLÖTE	4 PRINCIPAL	4 OCTAVE	2 OKTAVE
4 CHORAL BASS	4 TRAVERS-FLÖTE	4 SPITZFLÖTE	1 1/3 QUINTFLÖTE
MIXTURE IV	2 2/3 NASAT	2 SUPER OCTAVE	MIXTURE II
16 POSAUNE	2 BLOCKFLÖTE	MIXTURE IV	8 KRUMMHORN
4 CLARION	1 3/5 TIERCE	8 TROMPETTE	TREMULANT
GREAT TO PEDAL	MIXTURE IV	TREMULANT	SWELL TO POSITIV
SWELL TO PEDAL	16 BASSON	SWELL TO GREAT	MIDI ON POSITIV
POSITIV TO PEDAL	8 TROMPETTE	POSITIV TO GREAT	
BASS COUPLER	TREMULANT	ALTERNATE TUNING	
MIDI ON PEDAL	MIDI ON SWELL	GT-PD UNENCLOSED	
		MIDI ON GREAT	



150 Locust Street, Macungie, PA 18062 USA
 Phone: 610-966-2202 • Web site: www.allenorgans.com

HISTORIQUE IIIa™

(Standard Suites, Page 1)

Classic Allen (standard)

PEDAL

16 BOURDON
16 BOURDON DOUX (SW)
8 OCTAVE
8 GEDACKTFLÖTE
4 CHORAL BASS
MIXTURE IV
16 POSAUNE
4 CLARION
GREAT TO PEDAL
SWELL TO PEDAL
POSITIV TO PEDAL
BASS COUPLER
MIDI ON PEDAL

SWELL

8 GEDACKT
8 SALICIONAL
8 VOIX CELESTE
4 PRINCIPAL
4 TRAVERS-FLÖTE
2 2/3 NASAT
2 BLOCKFLÖTE
1 3/5 TIERCE
MIXTURE IV
16 BASSON
8 TROMPETTE
TREMULANT
MIDI ON SWELL

GREAT

16 LIEBLICH GEDACKT (SW)
8 PRINCIPAL
8 HARMONIC FLUTE
4 OCTAVE
4 SPITZFLÖTE
2 SUPER OCTAVE
MIXTURE IV
8 TROMPETTE
TREMULANT
SWELL TO GREAT
ALTERNATE TUNING
GT-PD UNENCLOSED
MIDI ON GREAT

POSITIV

8 HOLZ GEDACKT
4 PRINZIPAL
4 KOPPELFLÖTE
2 OKTAV
1-1/3 QUINTFLÖTE
MIXTURE II
8 KRUMMHORN
TREMULANT
SWELL TO POSITIV
MIDI ON POSITIV

Cavaillé-Coll (standard)

PÉDALE

16 FLÛTE
16 BOURDON DOUX (RÉC)
8 BASSE
8 FLÛTE
4 PRESTANT
MIXTURE IV
16 BOMBARDE
4 CLAIRON
TIRASSE/G.O.
TIRASSE/RÉCIT
TIRASSE/POSITIF
BASS COUPLER
MIDI ON PÉDALE

RÉCIT

8 FLÛTE
8 SALICIONAL
8 VOIX CELESTE
4 PRESTANT
4 FLÛTE TRAVERSIÈRE
2 2/3 NASARD
2 OCTAVIN
1 3/5 TIERCE
PLEIN JEU IV
16 BOMBARDE
8 TROMPETTE
TRÉMOLO
MIDI ON RÉCIT

GRAND-ORGUE

16 BOURDON DOUX (RÉC)
8 MONTRE
8 FLÛTE HARMONIQUE
4 PRESTANT
4 FLÛTE
2 DOUBLETTE
PROGRESSION HARMONIQUE IV
8 TROMPETTE
TRÉMOLO
RÉCIT TO G.O.
POSITIF TO G.O.
ALTERNATE TUNING
G.O.-PD UNENCLOSED
MIDI ON G.O.

POSITIF

8 BOURDON
4 PRINCIPAL
4 FLÛTE CONIQUE
2 DOUBLETTE
1-1/3 LARIGOT
CYMBALE III
8 CROMORNE
TRÉMOLO
RÉCIT TO POSITIF
MIDI ON POSITIF

Schlicker (standard)

PEDAL

16 SUBBASS
16 LIEBLICH GEDECKT (SW)
8 OCTAVE
8 METAL GEDECKT
4 CHORAL BASS
MIXTURE IV
16 FAGOTT
4 CLARION
GREAT TO PEDAL
SWELL TO PEDAL
POSITIV TO PEDAL
BASS COUPLER
MIDI ON PEDAL

SWELL

8 GEDECKT
8 SALICIONAL
8 VOIX CELESTE
4 GEMSHORN
4 SPITZFLOETE
2 2/3 NASAT
2 NACHTHORN
1 3/5 TERZ
MIXTURE IV
16 DULZIAN
8 TROMPETE
TREMULANT
MIDI ON SWELL

GREAT

16 LIEBLICH GEDECKT (SW)
8 PRINCIPAL
8 KUPFER GEDECKT
4 OCTAVE
4 KOPPELFLOETE
2 SUPER OCTAVE
MIXTURE IV-V
8 TROMPETE
TREMULANT
SWELL TO GREAT
POSITIV TO GREAT
ALTERNATE TUNING
GT-PD UNENCLOSED
MIDI ON GREAT

POSITIV

8 HOLZ GEDACKT
4 PRINCIPAL
4 ROHRFLOETE
2 GEMSHORN
1-1/3 KLEIN NASAT
SCHARF III
8 KRUMMHORN
TREMULANT
SWELL TO POSITIV
MIDI ON POSITIV

English Cathedral (standard)

PEDAL

16 BOURDON
16 LIEBLICH GEDACKT (SW)
8 OCTAVE
8 BASS FLUTE
4 CHORAL BASS
MIXTURE IV
16 OPHICLEIDE
4 CLARION
GREAT TO PEDAL
SWELL TO PEDAL
CHOIR TO PEDAL
BASS COUPLER
MIDI ON PEDAL

SWELL

8 FLUTE
8 SALICIONAL
8 VOX ANGELICA
4 PRINCIPAL
4 CONCERT FLUTE
2 2/3 NASARD
2 FLAGEOLET
1 3/5 TIERCE
CARILLON MIXTURE III
16 BASSON
8 TRUMPET
TREMULANT
MIDI ON SWELL

GREAT

16 LIEBLICH GEDACKT (SW)
8 OPEN DIAPASON
8 STOPPED DIAPASON
4 OCTAVE
4 LIEBLICH GEDECKT
2 FIFTEENTH
MIXTURE IV
8 TRUMPET
TREMULANT
SWELL TO GREAT
CHOIR TO GREAT
ALTERNATE TUNING
GT-PD UNENCLOSED
MIDI ON GREAT

CHOIR

8 CLARIBEL FLUTE
4 GEIGEN
4 LIEBLICHGEDECKT
2 FLAGEOLET
1-1/3 QUINTFLÖTE
DULCIANA MIXTURE III
8 CLARINET
TREMULANT
SWELL TO CHOIR
MIDI ON CHOIR

HISTORIQUE IIIa™

(Standard Suites, Page 2)

Arp Schnitzger (standard)

PEDAL

16 SUBBASS
16 ROHRFLÖHT (OB)
8 OCTAVA
8 FLÖHT
4 OCTAVA
MIXTURE VI-VIII
16 POSAUNE
4 TROMMET
HW TO PEDAL
OB TO PEDAL
RP. TO PEDAL
BASS COUPLER
MIDI ON PEDAL

OBERWERK

8 FLÖHT
8 SALICIONAL
8 GAMBA CELESTE
4 OCTAVA
4 SPITZFLÖHT
2 2/3 NASAT
2 NACHTHORN
1 3/5 TERZ
SCHARFF IV-VI
16 POSAUNE
8 TROMMET
TREMULANT
MIDI ON OB

HAUPTWERK

16 ROHRFLÖHT (OB)
8 PRINCIPAL
8 SPITZFLÖHT
4 OCTAVA
4 SPITZFLÖHT
2 SUPER OKTAV
RAUSCHPFEIFE II
8 TROMMET
TREMULANT
OB TO HW
RP. TO HW
ALTERNATE TUNING
HW-PD UNENCLOSED
MIDI ON HW

RUCKPOSITIV

8 GEDACKT
4 OCTAVA
4 BLOCHFLÖTE
2 OKTAVA
1-1/3 SIFFLOIT
SCHARFF III
8 BAHRPFEIFFE
TREMULANT
OB TO RP
MIDI ON RP

Aeolian Skinner (standard)

PEDAL

16 BOURDON
16 ROHRBOURDON (SW)
8 OCTAVE
8 FLUTE
4 CHORAL BASS
MIXTURE IV
16 POSAUNE
4 CLARION
GREAT TO PEDAL
SWELL TO PEDAL
POSITIV TO PEDAL
BASS COUPLER
MIDI ON PEDAL

SWELL

8 GEDACKT
8 VIOL DE GAMBA
8 VIOLE CELESTE
4 OCTAVE
4 FLAUTO TRAVERSO
2 2/3 NASARD
2 PICCOLO
1 3/5 TIERCE
PLEIN JEU III
16 CONTRE TROMPETTE
8 TROMPETTE
TREMULANT
MIDI ON SWELL

GREAT

16 ROHRBOURDON (SW)
8 PRINCIPAL
8 BOURDON
4 OCTAVE
4 FLÛTE HARMONIQUE
2 FIFTEENTH
MIXTURE IV
8 TROMPETTE
TREMULANT
SWELL TO GREAT
POSITIV TO GREAT
ALTERNATE TUNING
GT-PD UNENCLOSED
MIDI ON GREAT

POSITIV

8 GEDACKT
4 PRINCIPAL
4 KOPPELFLÖTE
2 BLOCKFLÖTE
1-1/3 QUINTFLÖTE
SCHARF III
8 KRUMMHORN
TREMULANT
SWELL TO POSITIV
MIDI ON POSITIV

Wurlitzer, Barton, Morton (standard)

PEDAL

16 DIAPHONE
16 BOURDON
8 OPEN DIAPASON
8 TIBIA CLAUSA
4 CLARINET
8 CONCERT FLUTE
16 OPHICLEIDE
4 TUBA HORN
TAP CYMBAL
GT TO PEDAL
SOLO TO PEDAL
ACC. TO PEDAL
BASS COUPLER
MIDI ON PEDAL

SOLO

SOLO SUB
8 TIBIA CLAUSA
8 VIOLINS 2 RKS.
4 OCTAVE
4 PICCOLO
2 2/3 TWELFTH
2 PICCOLO
1 3/5 TIERCE
8 TUBA HORN
8 ORCH. OBOE
GLOCKENSPIEL
MIDI ON SOLO

GREAT

8 TIBIA CLAUSA
8 OPEN DIAPASON
8 CONCERT FLUTE
4 OCTAVE
4 PICCOLO
4 CONCERT FLUTE
VIOLINS 2 RKS.
XYLOPHONE
SOLO TO GREAT
ACC. TO GREAT
MIDI ON GREAT

ACCOMPANIMENT

8 TIBIA CLAUSA
8 OPEN DIAPASON
8 CONCERT FLUTE
2 OCTAVE
4 PICCOLO
4 CONCERT FLUTE
VOX HUMANA
VIOLINS 2 RKS.
CHRYSOGLOTT
SOLO TO ACC.
MIDI ON ACC.

TREMULANTS

TIBIA/VOX
MAIN